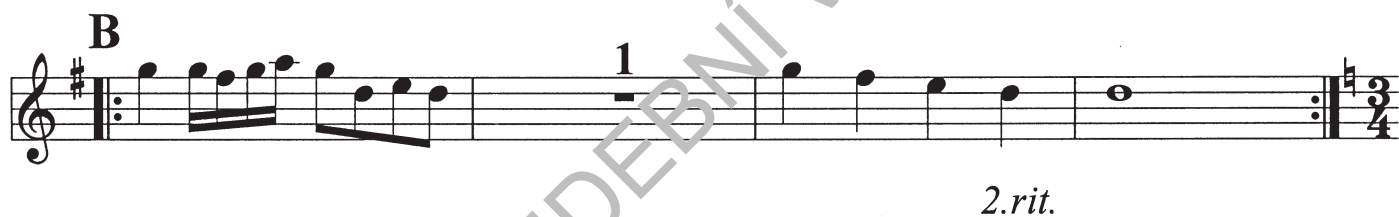


Prelude

♩ = 95



Tromba 1.B / 1.Trompete in B /2

Menuet I

$\text{♩} = 80$

A *po 2.tacet*

mf *f*

B *solo*

mf

f

C

f

Gigue

$\text{♩} = 60$

f

A **B**

f

C *1.Tacet*

f *2.rit.*



Tromba 1.B / 1.Trompete in B /3

Intrada

♩ = 90

f

A 8 B 4

f

C

f

D ♩ = ♩

mf-f 2.rit.

Menuet II

♩ = 90

mf

A 12

mf-f 2.rit.



Tromba piccola 1.A / 1.Piccolo Trompete in A / 4

La réjouissance

in A
♩ = 90

f

A

B

f

C

rit.



Tromba 1.B / 1.Trompete in B

La réjouissance

in B
♩ = 90
f

A

B

C

rit.

